



Conservation Hut to Breakfast Point Lookout



1 Hr

Moderate track

3

1.9 km Circuit

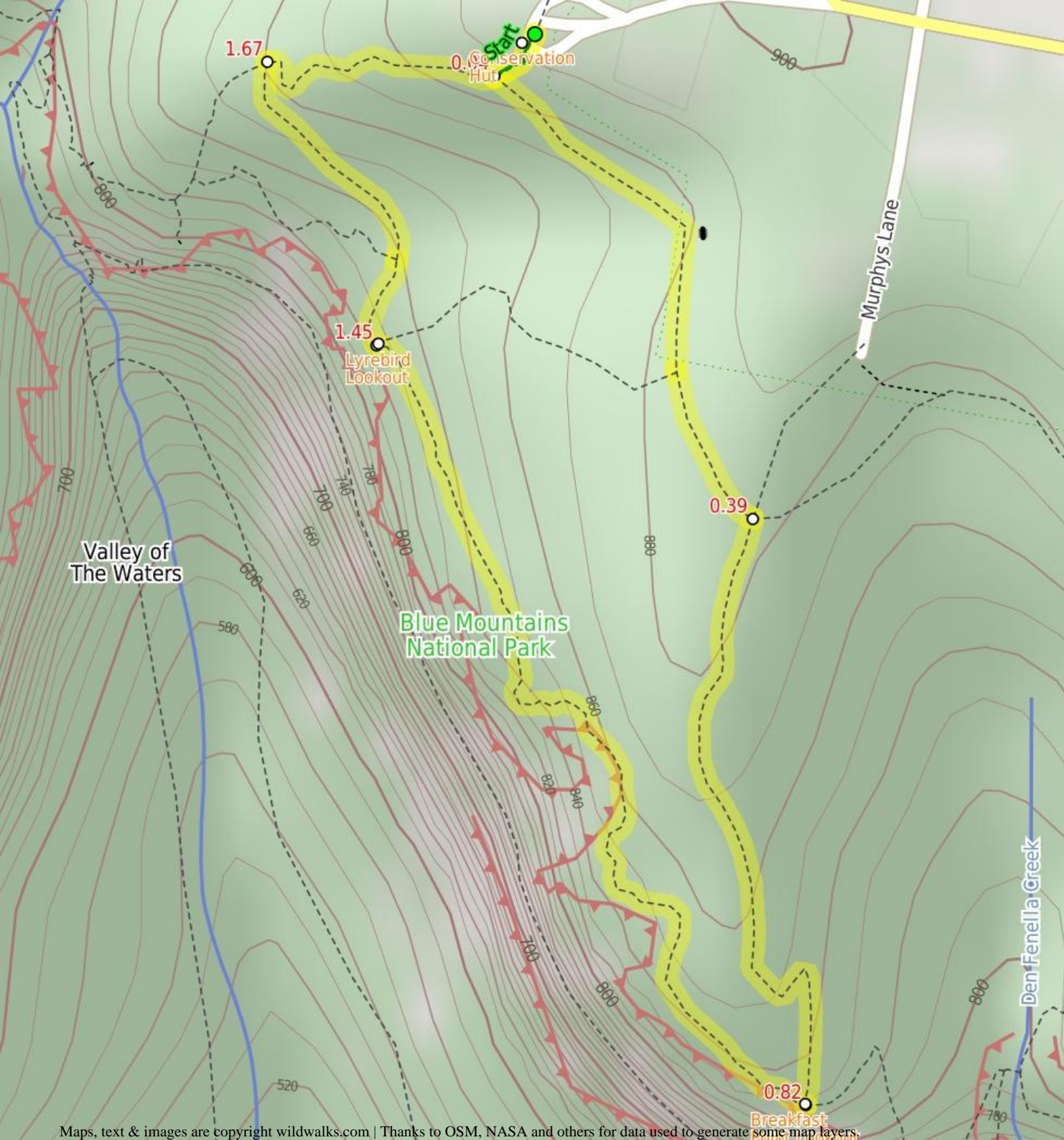
↑ 156m

The walk from Conservation Hut down to Breakfast Point Lookout is pretty with plenty of outlooks and some great bushland to enjoy. The walk passes a picnic shelter on the way down the hill to the brilliant views from Breakfast Point Lookout and then the Lyrebird Lookout.

828m

893m

Blue Mountains National Park



Are you ready to have fun?

Please ensure you and your group are well prepared and equipped for all possible hazards and delays. Check park closures, weather information and Fire Danger Rating before setting out. Optional side trips and alternate routes noted are not included in this walks overall grade, length or time estimate. Please allow extra time for resting and exploring areas of interest. The authors, staff and owners of wildwalks take care in preparing this information but will not accept responsibility for any inconvenience, loss or injury you may experience. Please take care, have fun - Happy Walking.

Getting there You can get to Conservation Hut (gps: -33.7202, 150.3629) by car or bus. Car: There is free parking available.

This is a circuit, so you will finish back at the start.

Find up to date and more information including; travel directions, weather, park closures and walker feedback at <http://wild.tl/chtbpl>

0 | Conservation Hut

Conservation Hut is a small cafe perched above the Valley of the Waters, Blue Mountains National Park. The hut was opened in 1963 as a meeting place for the local conservation movement. Rebuilt, Conservation Hut opened as a cafe in 1993, serving breakfast, lunch and dinner, seven days a week. Around the Conservation Hut is a small parking area, public toilets, picnic shelters, town water and B&B's. For further information or bookings call (02) 4757 3827. [More info.](#)

0 | Conservation Hut

(40 m 1 mins) From Conservation Hut, this walk follows the 'Valley of the Waters' sign down some timber and dirt steps passing a couple of picnic shelters. The track soon leads to the signposted intersection with the 'Short Cut Track' (still in view of the Conservation Hut).

0.04 | Int of Valley of the Waters Track and Shortcut Tra

(350 m 8 mins) Turn left : From the intersection, the walk heads along the 'Short Cut Track' following the arrow to 'Wentworth Falls picnic area'. The track gradually heads downhill with small log steps. After a short distance, the walk crosses a small creek using a bridge. The track then bends to the right and continues along till comes to a signposted intersection with another track (on the right).

Continue straight: From the intersection, the walk follows the sign to 'Wentworth Falls picnic area' that heads south-east along the flat bush track. Soon the walk comes to a 4-way intersection marked with signs pointing to Breakfast Pt Lookout, Murphy's Lane and to the Falls Picnic Area.

0.39 | Int of Shortcut and Breakfast Point Lookout Tracks

(430 m 9 mins) Turn right: From the intersection, this walk heads down the gentle hill, following the 'Breakfast Pt. LO' sign to the south. The track gradually heads downhill until it turns to the left, where the track becomes slightly steeper. After a short while, the walk turns back to the right and the track becomes rougher, continuing down the hill to Breakfast Point Lookout, and an intersection with the Overcliff Track.

0.82 | Breakfast Point Lookout

Breakfast Point Lookout is on the Overcliff Walk, west of Den Fenella Creek. The lookout has a short stone wall and great views across the Jamison Valley. The center piece of the view is out to Mount Solitary and beyond, there are also good views to Kings Tableland (left). This is a good spot to stop and enjoy the sweeping views of the majestic valley.

0.82 | Breakfast Point Lookout

(640 m 21 mins) Turn right: From Breakfast Point Lookout, this walk follows the Overcliff Track west, keeping the valley views to the left. The track soon passes an informal track (on the left) before heading along the base of a large rock wall (on the right). The track then heads up the steps following the handrail - soon after the end of the handrail, the track passes another informal track (on the left). After passing an often muddy section of track, this walk turns left at the intersection, then heads a few meters to the fenced and signposted 'Lyrebird Lookout'.

1.45 | Lyrebird Lookout

Lyrebird Lookout is a fenced and signposted lookout on the Overcliff Walk, south of the Conservation Hut in the Blue Mountains National Park. The lookout hosts a great view of Sublime Point (right) and Mount Solitary (centre). A welcome gap in the trees reveals this great view.

1.45 | Lyrebird Lookout

(220 m 6 mins) Continue straight: From Lyrebird Lookout, this walk keeps the green fence to the left and follows the track into the bush (with the valley behind and to the left). The walk crosses a section that is normally wet and muddy, and soon comes to a unsignposted 'Y' intersection with the Lyrebird Cliff Track on the left.

Continue straight: From the intersection, this walk takes the upper track and heads north-west. This goes up slightly before flattening out and continuing away from the cliffs, until coming to an intersection with a well-managed track, signposted as the Overcliff Track

1.67 | Int of Valley of the Waters and Overcliff Tracks

(210 m 5 mins) Turn right: From the intersection, this walk follows the 'National Pass - Tea Rooms' sign up the steps, with the handrail on the left. After a short time, the track passes a couple of faint tracks (on the right, leading to an old picnic area). Heading up the main steps, the walk passes another handrail (and signs) then an information sign, before coming to a three-way intersection with the 'Shortcut Track'.

Continue straight: From the intersection, this walk heads up the steps towards the building. The walk passes a couple of picnic shelters (on the right) before coming to the road and the front of the 'Conservation Hut'.

